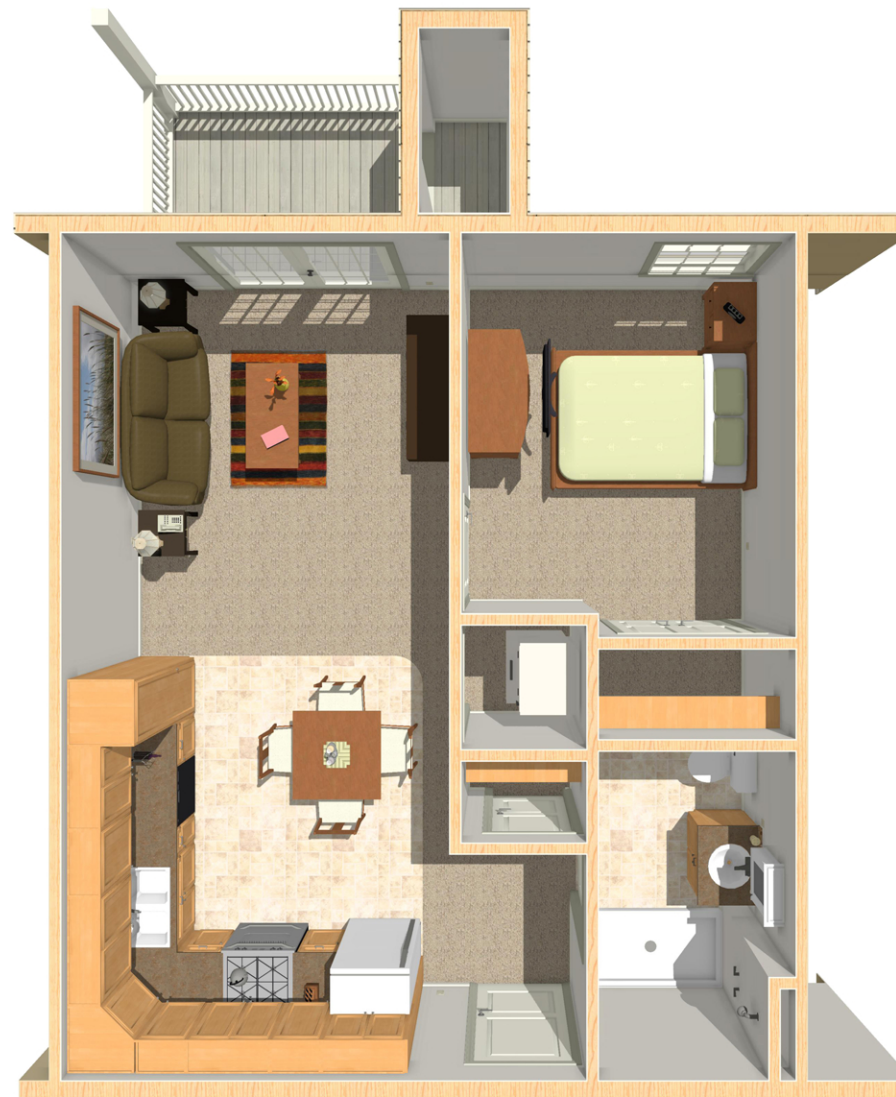




Unit A: 1 Bedroom, 1 Bath

Kitchen / Dining 10'-2" x 11'-9"
 Living Room 13'-4" x 10'-6"
 Bedroom 11'-9" x 10'-6"
 Deck 9' x 6'

* dimensions are approximate



Unit A1: 1 Bedroom, 1 Bath

Kitchen / Dining 10'-2" x 12'-0"
 Living 11'-5" x 13'-0"
 Bedroom 9'-10" x 11'-11"
 Deck 9' x 6'

* dimensions are approximate



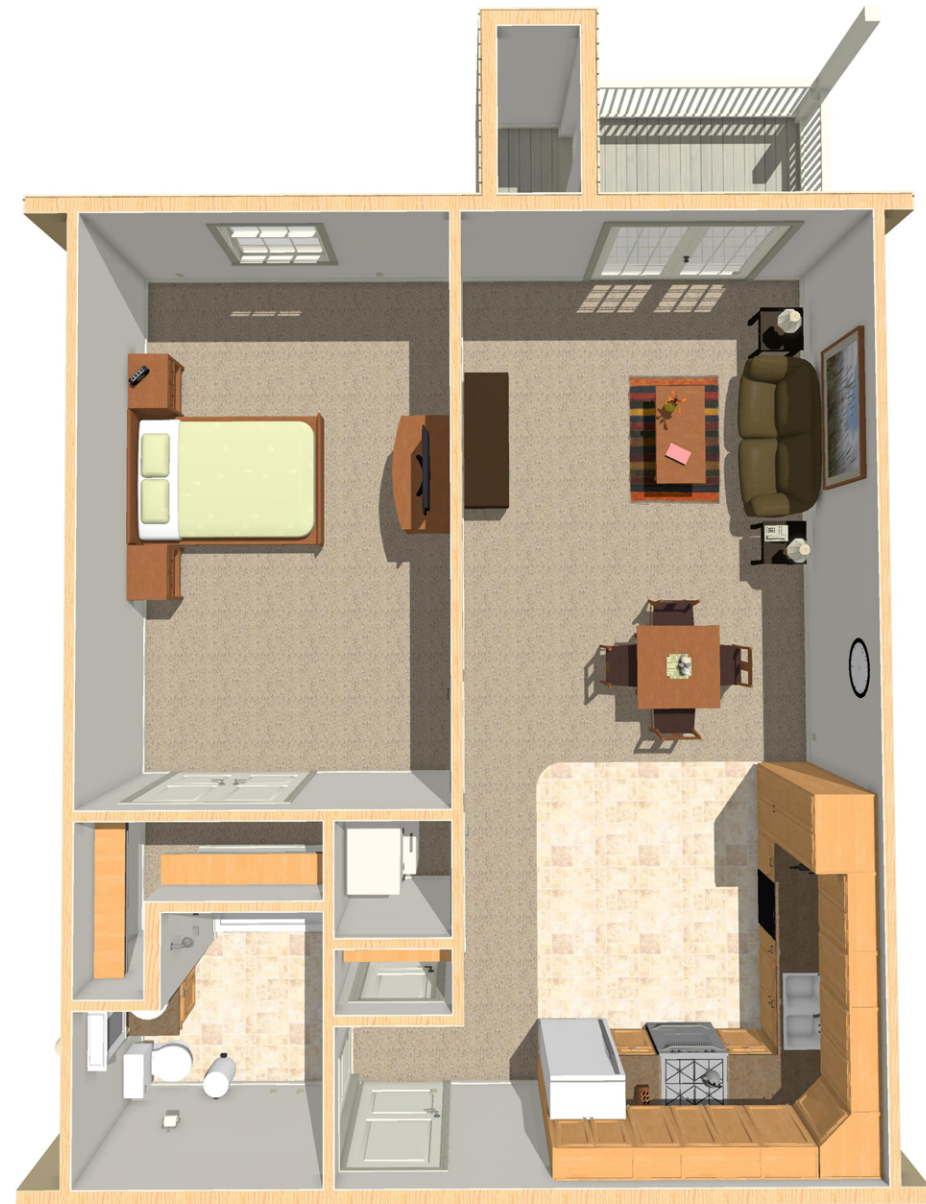
Unit A2: 1 Bedroom, 1 Bath

Kitchen / Dining 10'-5" x 12'-2"
 Living 13'-2" x 12'-9"
 Bedroom 11'-10" x 13'-2"
 Deck 9' x 6'

* dimensions are approximate

Connect55+ Warsaw





Unit A3: 1 Bedroom, 1 Bath

Kitchen / Dining	13'-2" x 12'-2"
Living Room	13'-2" x 18'-5"
Bedroom	11'-10" x 18'-11"
Deck	9' x 6'

* dimensions are approximate



Unit B: 2 Bedroom, 1 Bath

Kitchen / Dining	14'-3" x 11'-7"
Living	11'-8" x 12'-4"
Bedroom #1	12'-0" x 10'-4"
Bedroom #2	9'-3" x 10'-4"
Deck	9' x 6'

* dimensions are approximate



Unit C: 2 Bedroom, 1 1/2 Bath

Kitchen / Dining	11'-7" x 11'-7"
Living	12'-7" x 12'-2"
Bedroom #1	12'-0" x 10'-4"
Bedroom #2	10'-2" x 10'-4"
Deck	9' x 6'

* dimensions are approximate



Unit D: 2 Bedroom, 1 1/2 Bath

Kitchen / Dining	17'-3" x 11'-5"
Living	16'-6" x 14'-11"
Bedroom #1	13'-10" x 10'-6"
Bedroom #2	11'-5" x 10'-6"
Deck	9' x 6'

* dimensions are approximate

Connect55+ Warsaw

